



**SMOOTH FLOW
FITTINGS
(MADE IN EGYPT)**





CONTENTS

- INTRODUCTION

- DATA SHEET

- ✓ BUTT WELDED FITTINGS

- ✓ 90° ELBOW LONG RADIUS

- ✓ 90° ELBOW SHORT RADIUS

- ✓ 45° ELBOW LONG RADIUS

- ✓ EQUAL TEE

- ✓ REDUCER TEE

- REDUCER (CONCENTRIC - ECCENTRIC)

- ✓ END CAP

- MILL TEST CERTIFICATE

INTRODUCTION

TALCO FOR STEEL PRODUCTS TSP, is a leading manufacturer of high-quality steel fittings specialized for fire fighting systems. Strategically located in the 15th of May Industrial City in Cairo, Egypt, our factory is equipped with advanced manufacturing technology, skilled engineers, and rigorous quality control systems to ensure reliability, safety, and compliance with international standards.

With a strong focus on the fire protection industry, we offer a comprehensive range of steel fittings that meet the demands of residential, commercial, and industrial fire safety systems.

Our products are designed and tested to ensure performance under high pressure and extreme conditions, making them ideal for critical fire suppression applications.

At TALCO FOR STEEL PRODUCTS TSP, we are committed to delivering superior products, timely service, and long-term partnerships. Whether you're a contractor, distributor, or systems integrator, we provide the trusted components you need for dependable fire protection systems.

our vision

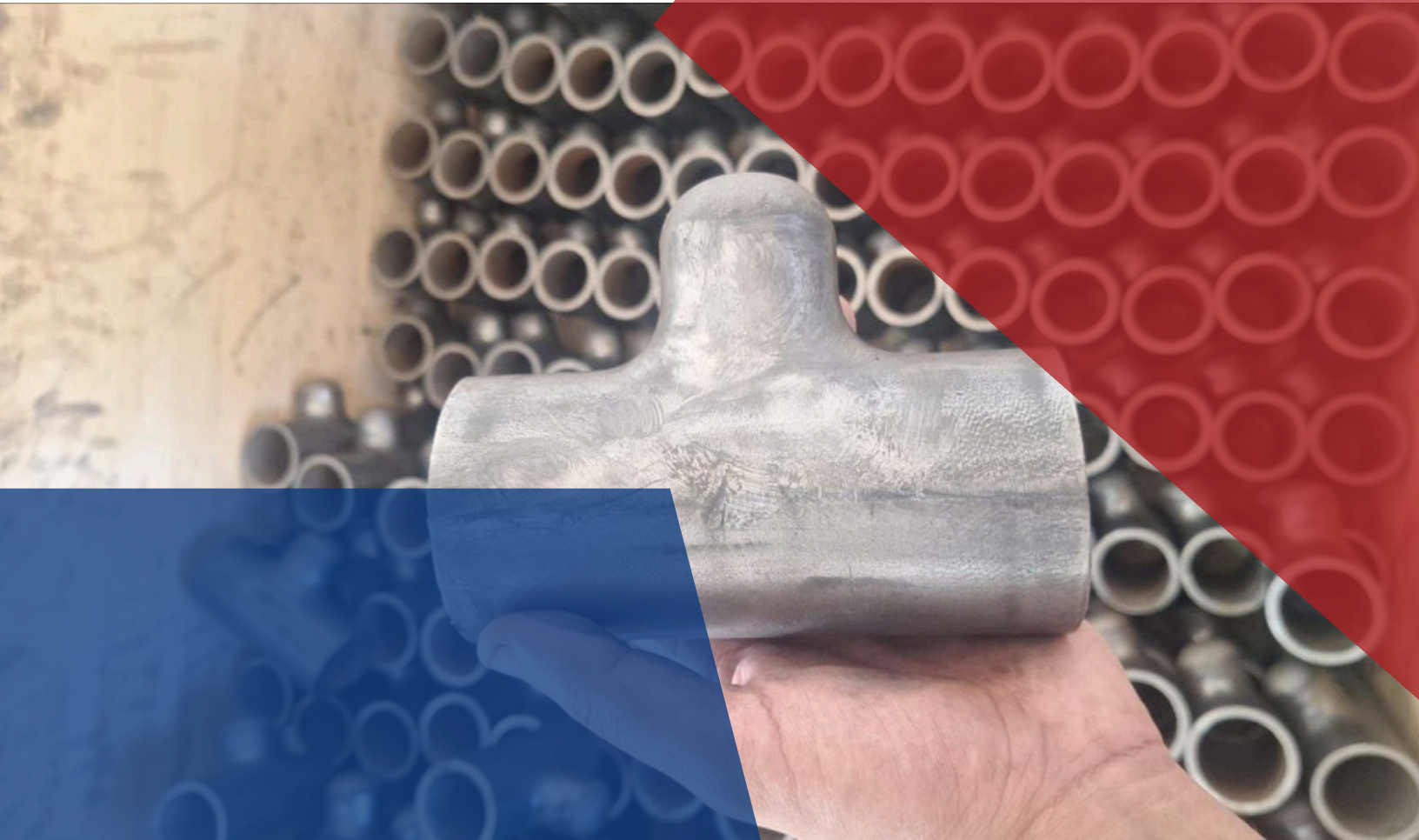
To be a trusted regional leader in manufacturing high-performance steel fittings for fire protection systems, setting the standard for safety, quality, and innovation in the fire safety industry.



our Mission

Our mission is to manufacture and supply durable, high-quality steel fittings tailored for firefighting applications, ensuring safety and reliability in every product we deliver.





BUTT-WELD FITTINGS



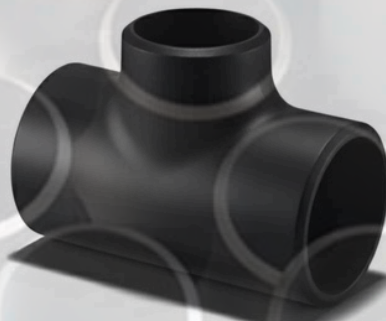
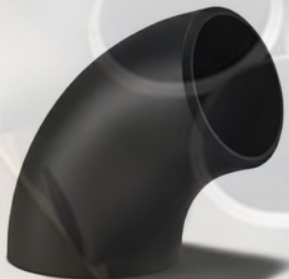
Guaranteed Product Quality

PRODUCTS OF BUTT-WELDING



(BUTT-WELD FITTINGS)

Nominal Pipe Size (inch)	Wall Thickness (mm)		
	SCH 40	SCH STD	XS
¼	2.24	2.24	3.02
½	2.77	2.77	3.73
¾	2.87	2.87	3.91
1	3.38	3.38	4.55
1-¼	3.56	3.56	4.85
1-½	3.68	3.68	5.08
2	3.91	3.91	5.54
2-½	5.16	5.16	7.01
3	5.49	5.49	7.62
3-½	5.74	5.74	8.08
4	6.02	6.02	8.56
5	6.55	6.55	9.52
6	7.11	7.11	10.97
8	8.18	8.18	12.7
10	9.27	9.27	12.7
12	10.31	9.52	12.7
14	11.13	9.52	12.7
16	12.7	9.52	12.7



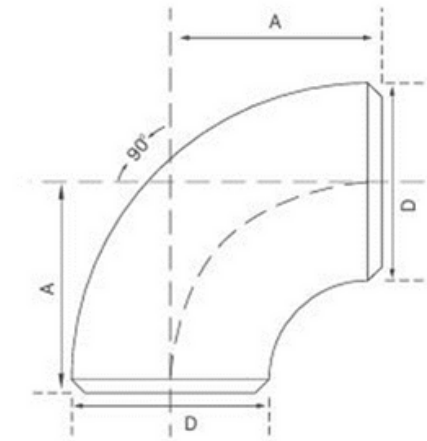
(BUTT-WELD FITTINGS)

90° ELBOW LONG RADIUS

Functions:

The function of the elbow is to change direction or flow in a piping system. Elbows are split as follows, the distance over which they change direction; the centre line of one end to the opposite face, this is known as the "centre to face" distance and is equivalent to the radius through which the elbow is bent.

Nominal Pipe Size	Outside Diameter D	Centre to End A
2	60.3	76
2-½	73	95
3	88.9	114
3-½	101.6	133
4	114.3	152
5	141.3	190
6	168.3	229
8	219.1	305
10	273	381
12	323.8	457
14	355.6	533
16	406.4	610



Material:

ASTM A234 Grade WPB

Dimension:

ASME B16.9

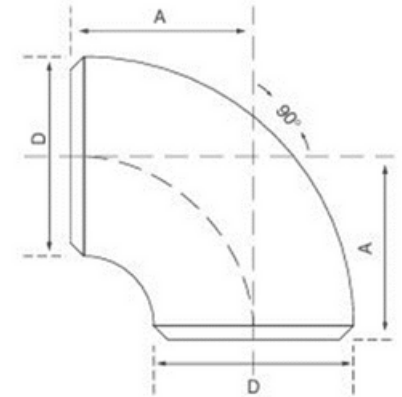
(BUTT-WELD FITTINGS)

90° ELBOW SHORT RADIUS

Functions:

A Short radius elbow gives a sharpen turn to the piping system as compared to long radius elbow. Short radius elbow is less in space consumption than long radius elbow, cost effective and high efficiency.

Nominal Pipe Size (inch)	Outside Diameter D (mm)	Centre to End A (mm)
2	60.3	51
2-½	73	64
3	88.9	76
3-½	101.6	89
4	114.3	102
5	141.3	127
6	168.3	152
8	219.1	203
10	273	254
12	323.8	305
14	355.6	356
16	406.4	406



Material:

ASTM A234 Grade WPB

Dimension:

ASME B16.9

(BUTT-WELD FITTINGS)

45° ELBOW LONG RADIUS

Functions:

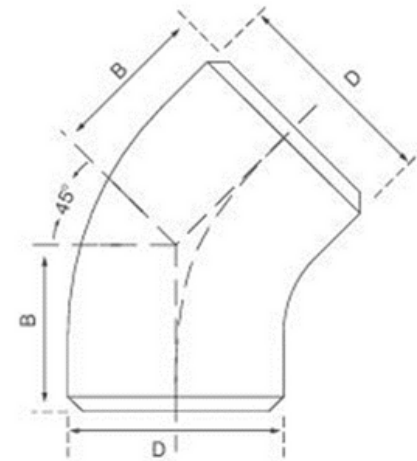
The function of a 45° elbow is the same as a 90° elbow, but the measurement of dimensions.

The radius of a 45° elbow is the same as the radius of the 90° L.R. elbow where 'R' equals 1-½

D. However, the centre to face dimension is measured from each face to the point of intersection

of the centre lines perpendicular to each other. This is due to the smaller degree of bend.

Nominal Pipe Size	Outside Diameter D	Centre to End A
2	60.3	35
2-½	73	44
3	88.9	51
3-½	101.6	57
4	114.3	64
5	141.3	79
6	168.3	95
8	219.1	127
10	273	159
12	323.8	190
14	355.6	222
16	406.4	254



Material:	ASTM A234 Grade WPB
Dimension:	ASME B16.9

(BUTT-WELD FITTINGS)

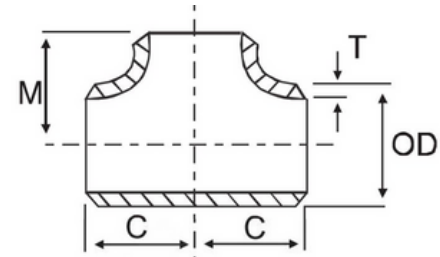
EQUAL TEE



Functions:

The function of a tee is to permit flow at 90° to the main direction of flow. The main flow passes through the 'run' while the 90° outlet is known as the 'branch'. The equal tee is manufactured with all three outlets being the same size.

Nominal Pipe Size (inch)	Outside Diameter D (mm)	Centre to End	
		C (mm)	M (mm)
2	60.3	64	64
2-½	73	76	76
3	88.9	86	86
3-½	101.6	95	95
4	114.3	105	105
5	141.3	124	124
6	168.3	143	143
8	219.1	178	178
10	273	216	216
12	323.8	254	254
14	355.6	279	279
16	406.4	305	305



Material:	ASTM A234 Grade WPB
Dimension:	ASME B16.9

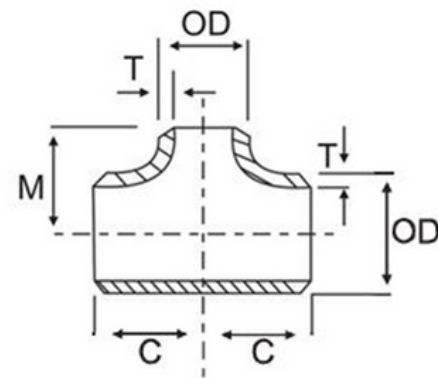
(BUTT-WELD FITTINGS)

REDUCER TEE

Functions:

The reducing tee is manufactured with the branch outlet smaller than the run to obtain the desired flow and pressure through the system.

Nominal Pipe Size (inch)	Outside Diameter		Centre to End	
	D (mm)	D1 (mm)	C (mm)	M (mm)
2-½ x 1	73	33.4	76	57
2-½ x 1-¼	73	42.2	76	64
2-½ x 1-½	73	48.3	76	67
2-½ x 2	73	60.3	76	70
3 x 1	88.9	33.4	86	70
3 x 1-¼	88.9	42.2	86	70
3 x 1-½	88.9	48.3	86	73
3 x 2	88.9	60.3	86	76
3 x 2-½	88.9	73	86	83
4 x 1	114.3	33.4	105	80
4 x 1-¼	114.3	42.2	105	80
4 x 1-½	114.3	48.3	105	86
4 x 2	114.3	60.3	105	89
4 x 2-½	114.3	73	105	95
4 x 3	114.3	88.9	105	98
6 x 1	168.3	33.4	143	111
6 x 1-¼	168.3	42.2	143	114
6 x 1-½	168.3	48.3	143	117



(BUTT-WELD FITTINGS)

REDUCER TEE

Nominal Pipe Size (inch)	Outside Diameter		Centre to End	
	D (mm)	D1 (mm)	C (mm)	M (mm)
6 x 2	168.3	60.3	143	120
6 x 2-½	168.3	73	143	121
6 x 3	168.3	88.9	143	124
6 x 4	168.3	114.3	143	130
8 x 2-½	219.1	73	178	148
8 x 3	219.1	88.9	178	152
8 x 4	219.1	114.3	178	156
8 x 6	219.1	168.3	178	168
10 x 8	273.1	219.1	216	203
10 x 6	273.1	168.1	216	194
10 x 4	273.1	114.3	216	184
12 x 10	323.9	273.1	254	241
12 x 8	323.9	219.1	254	229
12 x 6	323.9	168.3	254	219
12 x 4	323.9	114.3	254	213



Material:

ASTM A234 Grade WPB

Dimension:

ASME B16.9

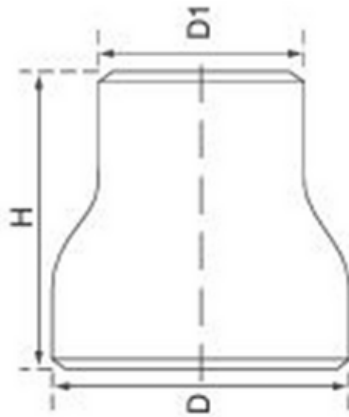
(BUTT-WELD FITTINGS

REDUCERS

Functions:

A reducer is a fitting that can be used to connect between two different sizes of pipes.

A concentric reducer shapes like a cone where eccentric reducer has an edge which is parallel to the joining pipe, this parallel edge outcomes in the two pipes having balanced centre lines.



Nominal Pipe Size (inch)	Outside Diameter		End To End
	D (mm)	D1 (mm)	
	2 x 1-½	60	
2-½ x 2	73	60	89
2-½ x 1-½	73	48	89
2-½ x 1-¼	73	42	89
2-½ x 1	73	34	89
3 x 2-½	89	73	89
3 x 2	89	60	89
3 x 1-½	89	48	89
3 x 1-¼	89	42	89
3 x 1	89	34	89

(BUTT-WELD FITTINGS)

REDUCERS



Nominal Pipe Size (inch)	Outside Diameter		End To End
	D (mm)	D1 (mm)	
4 x 3	114	89	102
4 x 2-½	114	73	102
4 x 2	114	60	102
4 x 1-½	114	48	102
4 x 1-¼	114	42	102
4 x 1	114	34	102
6 x 4	168	114	140
6 x 3	168	89	140
6 x 2-½	168	73	140
6 x 2	168	60	140
8 x 6	219	168	152
8 x 4	219	114	152
8 x 3	219	89	152

Material:

ASTM A234 Grade WPB

Dimension:

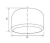
ASME B16.9

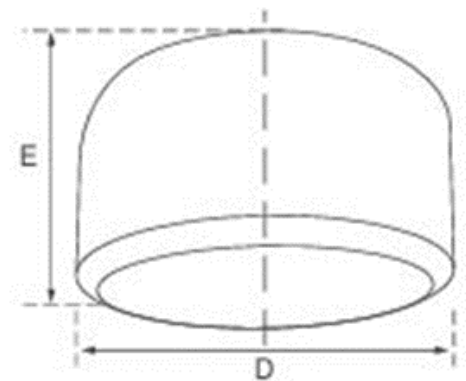
(BUTT-WELD FITTINGS)

END CAP

Functions:

The function of an end cap is to block off the end of a line in piping systems. This is achieved by placing the end cap over the open line and welding around the joint.

Nominal Pipe Size	Outside Diameter	Length E (mm)
½	21.3	25
¾	26.7	25
1	33.4	38
1-¼	42.2	38
1-½	48.3	38
2	60.3	38
2-½	73	38
3	88.9	51
3-½	101.6	64
4	114.3	64
5	141.3	76
6	168.3	
8	219.1	102
10	273	127
12	323.8	152
14	355.6	165
16	406.4	178



Material:

ASTM A234 Grade WPB

Dimension:

ASME B16.9



**MILL TEST
CERTIFICATE**



Guaranteed Product Quality



MILL TEST CERTIFICATE

Certificate #	251019-01T
DATE	
Material Specifications	ASTM A234
Items	Carbon Steel Fittings
Brand	TALCO

	HEAT NUMBER	SIZE	Chemical Composition								
			C	Si	Mn	P	S	Cr	Ni	Mo	Al
1	T258001	2.5 x 1"	0.209	0.194	0.459	0.009	0.007	0.025	0.017	<0.0020	0.0062
2											
3											

	Chemical Composition										
	Cu	Co	Ti	Nb	V	W	Pb	Mg	B	Sn	Zn
1	0.027	0.0077	<0.0010	<0.0040	0.0037	<0.010	<0.0030	<0.0010	0.00	<0.0010	<0.0020
2											
3											

	Chemical Composition						
	Bi	Ca	Ce	Zr	Le	As	Fe
1	<0.0020	0.0016	<0.0030	0.0035	<0.0010	0.016	99.00%
2							
3							

Dimensions		
OD 1 (mm)	OD 2 (mm)	Wight (KG)
73.20	33.40	1.55

	Hardness Test (HB)	Tensile at yield 0.2% Mpa	Max. Stress Mpa	Elongation %
1	142	437.34	534.09	26.79
2				
3				

📍 Industrial Area #2, Zone 7, Block #1, Factory #2, 15th of May Industrial City, Cairo, Egypt

✉ info@talco-tsp.com | ☎ +20 100 695 1495 | 🌐 www.talco-tsp.com



GET IN TOUCH



+20 10 06951495



Address: Industrial Area #2, Zone 7, Block # 1,
Factory #2, 15th Of May Industrial City, Cairo, Egypt.



info@talco-tsp.com



<https://talco-tsp.com/>